



Topaz Industrial Rotary Encoders

Production of all kinds of incremental and absolute custom made encoders with support of industrial protocols

Telephone sales advice and orders

0991 671 7104



1238, Martyr Raeisi Building, Eqbal Science and Technology Park, Yazd, Iran



info@topazco.ir



www.topazco.ir

INCREMENTAL ROTARY ENCODER (TERI)

“Magnetic Measurement,
50 mm Body Diameter, With Shaft”



GENERAL SPECIFICATIONS

- Incremental measurement with Magnetic principle
- Resolution up to 16,000 pulses for Magnetic
- 50 mm body diameter
- 6 mm or 8 mm or 10 mm shaft options
- Magnetic: 3000 RPM operating speed
- 300 KHz response frequency
- High accuracy
- Robust structure, long operating life
- Connection with cable or socket
- IP54 protection class



The TERI series rotary encoders measure on a magnetic principle and operate incrementally.

The TERI series operating on the magnetic principle up to 16000 pulses.

Applications

- Wind Applications / Power Plants
- Marine or Utility Vehicle Applications
- Press or Wood and Stone Processing Machinery
- Construction Machinery
- Offshore Applications
- Commercial Solar Plants
- Filling Plants
- Food & Beverage Applications
- Oil & Gas - Pipe Handling and Cranes

TECHNICAL SPECIFICATIONS

*Resolution	Up to 16,000 pulses according to the order (e.g. 100, 200, 300, 360, 500, 900, 1000, 1024, 2048, 3600).
Operating Speed	3000
Measuring Type Magnetic	Magnetic
Response Frequency	300 KHz
*Supply Voltage	7-24
Current Consumption	60 mA nominal
*Output Type	TTL Line Driver
*Output Signals	A, /A, B, /B, Z, /Z
*Electrical Connection	5 or 8x0,14 mm ² shielded cable
Body Diameter	50 mm
*Shaft Diameter	6mm or 8 mm or 10 mm
Operating Temperature	-25...+85 °C
Storage Temperature	-40...+100 °C
IP Protection Class	IP54
Weight	~300 gr
Material	Body: Aluminum Shaft: Stainless Steel

Note!The specifications indicated by (*) vary according to the model selected. The detailed code table for product selection is shown on page 3.

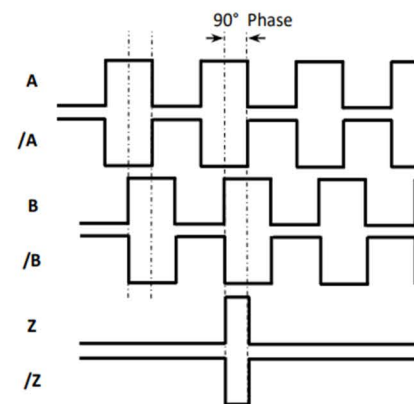
INCREMENTAL ROTARY ENCODER (TERI)

“Magnetic Measurement,
50 mm Body Diameter, With Shaft”



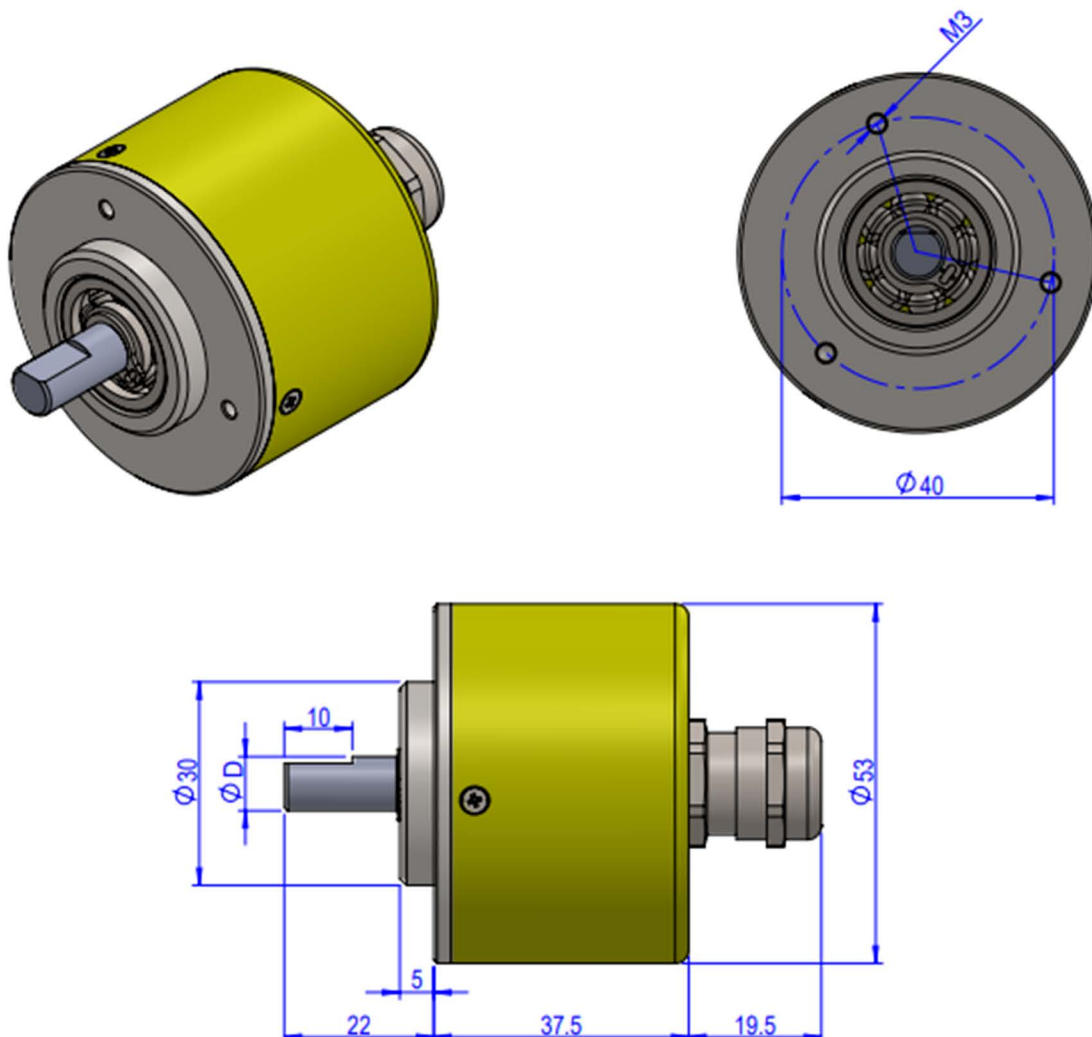
ELECTRICAL CONNECTIONS

SIGNAL	CABLE COLOR
+V	BROWN
GND	BLUE
OUT A	BLACK
OUT B	WHITE
OUT Z	GREEN
OUT /A	RED
OUT /B	GRAY
OUT /Z	YELLOW
F.G.	SHIELD



The table above shows the cable colors of the sensor output signals. If the control circuit is suitable in the Line Driver sensors of the not output signals (/A, /B, /Z) have to be added to the system. If it is not suitable /A, /B, /Z signal cables must be fixed as insulated separately. Don't forget that these edges have electricity too.

MECHANICAL DIMENSIONS (mm)



INCREMENTAL ROTARY ENCODER (TERI)

“Magnetic Measurement,
50 mm Body Diameter, With Shaft”



PRODUCT CODE

PRODUCT CODE										
Model I : Incremental A : Absolute C : Customize			Body Diameter 50: 50 mm		Supply and Output PP : 10...30 VDC Supply : 10...30VDC Output TTL : 5 VDC Supply : 5 VDC TTL RS422 Line Driver Out. HTL : 10...30 VDC Supply : 5 VDC TTL RS422 Line Driver Out. HPL : 5...30 VDC Supply : 5...30 VDC Push-Pull Output OCL : NPN Open Collector OCP : PNP Open Collector			Electrical Connection 3M : 3 m cable (standard) 5M : 5 m cable 10M : 10 m cable *Ask for other options		Shaft Diameter 6 : 6 mm 8 : 8 mm 10 : 10 mm
TER	X	X	XX	XXXX	XXX	X	XX	XX	XX	X
SERIES TER:ROTARY ENCODER		Shaft Type S : Shaft		Resolution See Resolutions*		Output Signal 3 (A,B,Z) 6 (A _r /A _i ,B _r /B _i ,Z _r /Z _i)		Cable Direction A : From backside Y : From side		Flange Type C : Clamping

(1) different cable lengths or socket models can be requested.

(2) Cable direction can be selected from backside or side

PG7 gland is used when the cable direction is from the rear, PG7 gland is not used when the cable direction is from the back

* Please contact for other (customized) options.

*Resolutions:

Magnetic: Up to 16,000 pulses.

Sample Coding:

TER-I-M-S-50-1024-HPL-3-5M-A-8-C

TER:ROTARY ENCODER, I:INCREMENTAL, M : Magnetic, S : Shaft, 50 : 50 mm,1024PULS PER ROTATION, HPL: Push-Pull, 3 (A,B,Z), A : From backside, Shaft Diameter:8 : 8 mm , C : Clamping

Information



1238, Martyr Raeisi Building, Eqbal Science and Technology Park, Yazd, Iran



Tel: +98 991 671 71 04



info@topazco.ir



www.topazco.ir